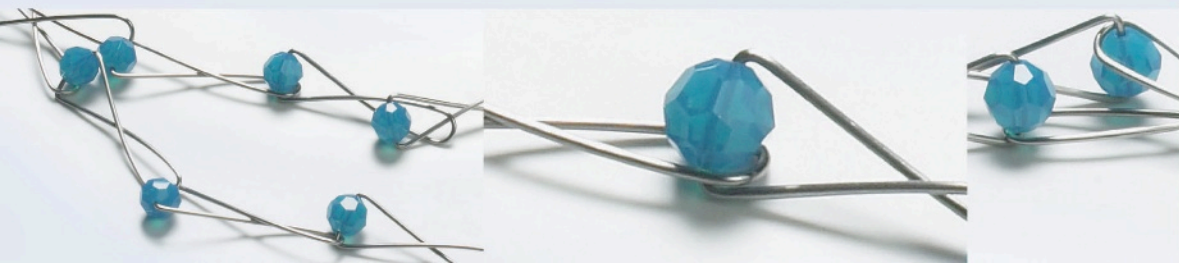


OCEAN DROP NECKLACE



INSTRUCTION
GUIDE

OCEAN DROP NECKLACE



CRYSTALLIZED™ – Swarovski Elements

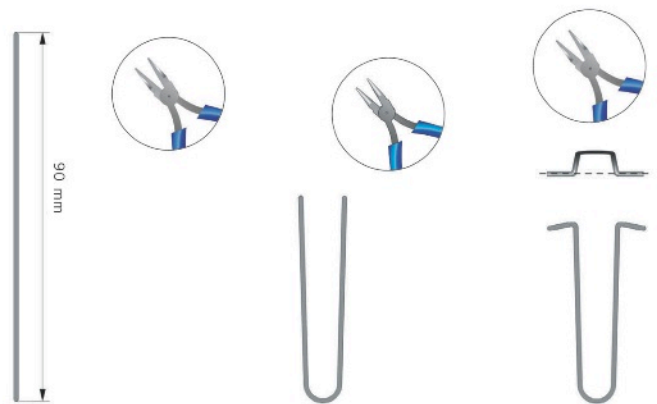
Article	Product Group	Article No.	Amount	Size	Color	Color Code	Supplies
	Beads	5000	40	8 mm	Caribbean Blue Opal	397	Wire, 18 gauge (1 mm), Sterling silver, 310*/25.9 ft. OR Wire, 20 gauge (0.8 mm), Sterling silver, 310*/25.9 ft.
							Tools
							Diagonal cutters
							Round nose pliers
							Chain nose pliers

STEP 1

Prepare the wire components:

- Cut 40 lengths of sterling silver wire to 3.5" (90mm).
- Bend the wire in half around the largest part of a round nosepliers to form a U-curve at one end. Keep the legs exactly the same height.
- Using a chainnose pliers, bend each tip outward to a right angle of 3/16" (5mm). (Tip: For consistency, mark the inner jaw of the pliers with permanent marker at the point that measures 3/16" across. Use this position/mark to bend the same length of wire each time.)
(Note: There will be slightly more wire than will fit into the hole on one side of the crystal. This creates a reservoir to seat the wire for the adjacent link.)

STEP 1

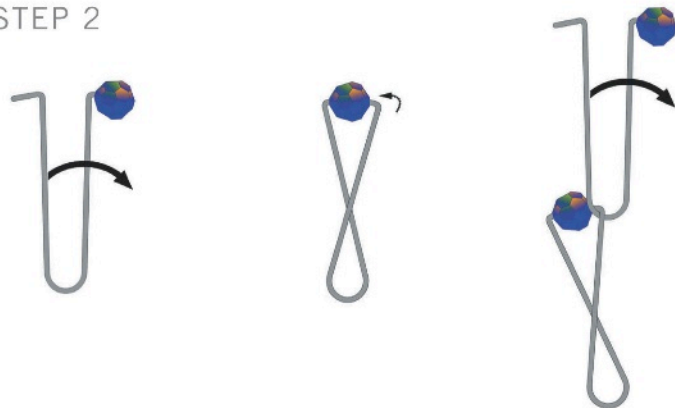


STEP 2

Assemble the necklace:

- Load a Art. 5000 crystal on one outward tip of a wire component.
- Cross one leg of the wire component over the other and insert the empty tip into the open hole of the same bead.
- Repeat the last step 38 more times adding in the last component to the bead-end of the current component before completing the link
(Note: This will keep all the components same end up).

STEP 2



STEP 3

Finish the necklace:

- Start the 40th link as before but add in the first link to create a continuous circle.