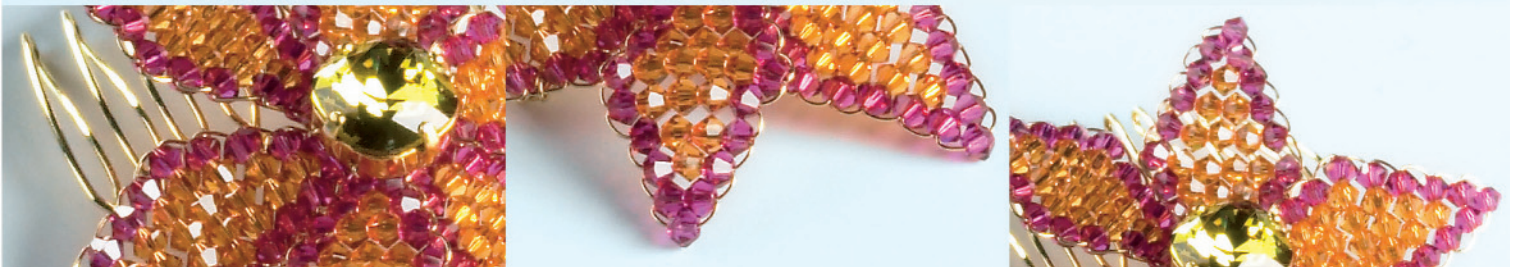


CREATE  
your STYLE™  
with CRYSTALLIZED™ – Swarovski Elements


# FLOWER POWER HAIRCOMB



# FLOWER POWER HAIRCOMB



## CRYSTALLIZED™ – Swarovski Elements

| Article   | Product Group | Article No. | Amount | Size  | Color        | Color Code | Supplies   |  |
|---|---------------|-------------|--------|-------|--------------|------------|--|--|
|  | Beads         | 5301        | 120    | 4 mm  | Fuchsia (F)  | 502        | 6 18" pieces of 28 gauge gold tone wire<br>2 8" pieces 28 gauge gold tone wire<br>1 12" piece 28 gauge gold tone wire<br>1 Gold tone hair comb<br>Gold tone 2 hole setting |  |
|  | Beads         | 5301        | 96     | 4 mm  | Hyacinth (H) | 236        |  |  |
|  | Fancy Stone   | 4470        | 1      | 12 mm | Erinite      | 360        |  |  |
|   |               |             |        |       |              |            | <b>Tools</b>   |  |
|   |               |             |        |       |              |            | Wire Cutter  |  |
|   |               |             |        |       |              |            | Flat Nose Pliers   |  |

### STEP 1

- Thread 1 Fuchsia bead to the middle of an 18" piece of wire.
- Add 2 Fuchsia beads to one side of wire, lace other side of wire thru 2 beads and pull snug.
- Add 1-Fuchsia, 1-Hyacinth, 1-Fuchsia and lace other side of wire thru FHF and pull snug.

### STEP 2+3

- Continue adding beads in the following pattern
  - a. F, 2H, F
  - b. F, 3H, F
  - c. F, 4H, F
  - d. F, 3H, F
  - e. F, 2H, F
  - f. F, H, F
  - g. 2F
  - h. F
- When the first petal is complete, secure the beads by twisting the wire. Make 6 petals.

### STEP 4

- Place the Erinite crystal into the frame and secure in place by gently pressing on the prongs with a Flat Nose pliers.
- Thread 8" wire through holes in stone setting.
- With a Flat Nose Pliers, twist the stems of the 6 petals to form a flower.

### STEP 5

- Place the Erinite set stone in the center of the flower and twist wire around the twisted petal stems.

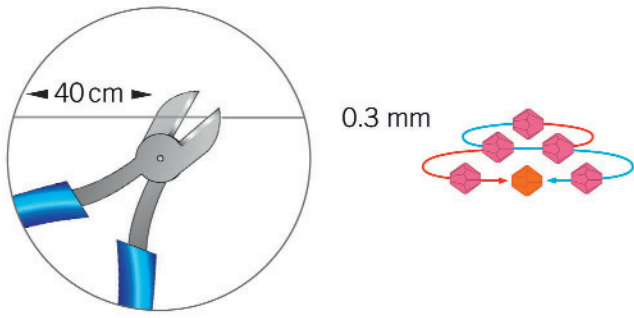
### STEP 6

- Make sure the wire is twisted tightly under the flower and cut excess wire.

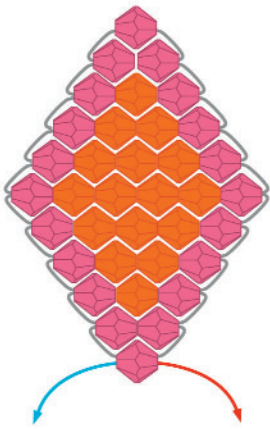
### STEP 7

- Weave 12" wire under Erinite stone and pass thru to back of flower. Secure flower on hair comb.

STEP 1



STEP 2

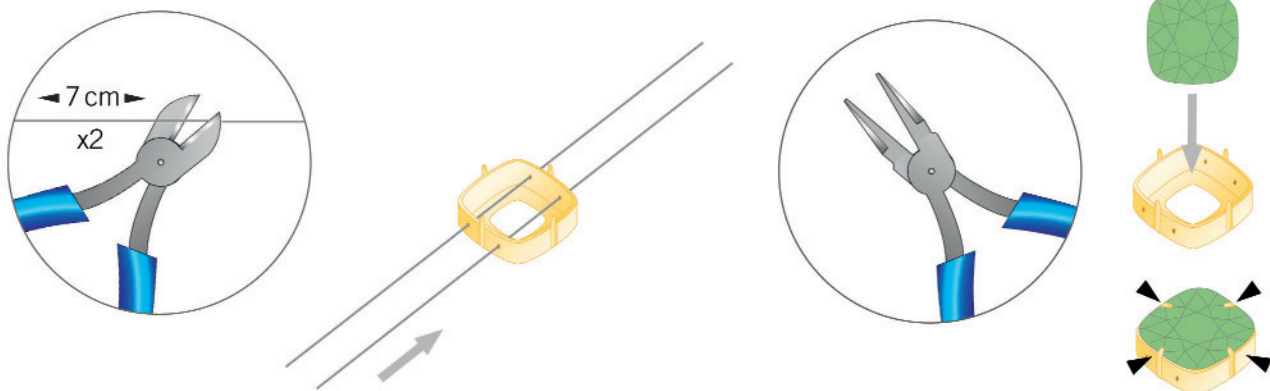


STEP 3

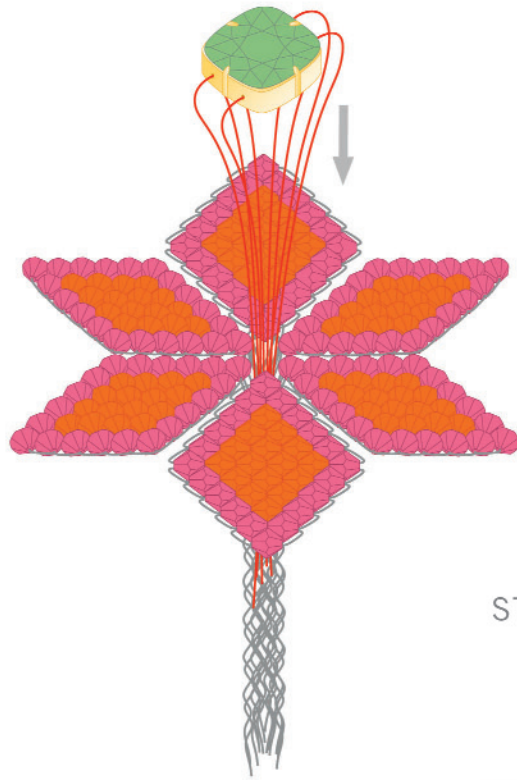
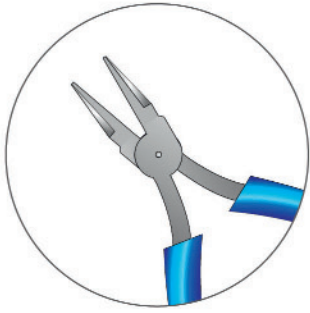


REPEAT STEP 1 - 3 6 X

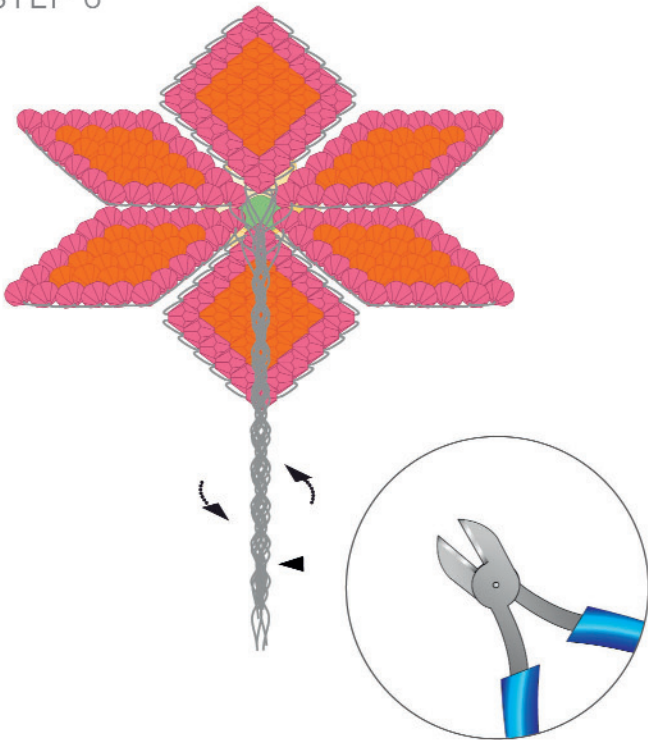
STEP 4



STEP 5



STEP 6



STEP 7

