

CREATE
YOUR STYLE with
CRYSTALLIZED™
- Swarovski Elements

MAKE YOUR CREATIVITY STICK

NAIL DESIGN

HOLIDAY GLAMOUR



... perfect for the holidays



INSTRUCTION GUIDE

NAIL DESIGN HOLIDAY GLAMOUR



CRYSTALLIZED™ – Swarovski Elements

Supplies & Tools

VARIATION 1

Article	Product Group	Article No.	Amount	Size	Colour	Colour Code	Supplies
	Flat Backs No Hotfix	2028	3 pcs.	SS05	Aquamarine	202	Supplies Nail polish, white, silk Plastic fingernails Tools Tooth pick
	Flat Backs No Hotfix	2028	6 pcs.	SS05	Fuchsia	502	
	Flat Backs No Hotfix	2028	5 pcs.	SS05	Light Amethyst	212	
	Flat Backs No Hotfix	2028	4 pcs.	SS05	Peridot	214	
	Flat Backs No Hotfix	2028	10 pcs.	SS05	Silk	391	
	Flat Backs No Hotfix	2028	6 pcs.	SS05	Topaz	203	
	Flat Backs No Hotfix	2028	3 pcs.	SS07	Fuchsia	502	
	Flat Backs No Hotfix	2028	2 pcs.	SS07	Topaz	203	
	Flat Backs No Hotfix	2028	1 pc.	SS12	Aquamarine	202	
	Flat Backs No Hotfix	2028	1 pc.	SS12	Light Amethyst	212	
	Flat Backs No Hotfix	2028	3 pcs.	SS12	Peridot	214	
	Flat Backs No Hotfix	2028	2 pcs.	SS12	Silk	391	
	Flat Backs No Hotfix	2028	1 pc.	SS12	Topaz	203	

VARIATION 2

Article	Product Group	Article No.	Amount	Size	Colour	Colour Code	Supplies
	Flat Backs No Hotfix	2028	36 pcs.	SS05	Crystal	001	Supplies Nail polish, red, silver Plastic fingernails Tools Tooth pick
	Flat Backs No Hotfix	2028	7 pcs.	SS07	Crystal	001	
	Flat Backs No Hotfix	2028	2 pcs.	SS12	Crystal	001	
	Flat Backs No Hotfix	2400	1 pc.	3 mm	Crystal	001	

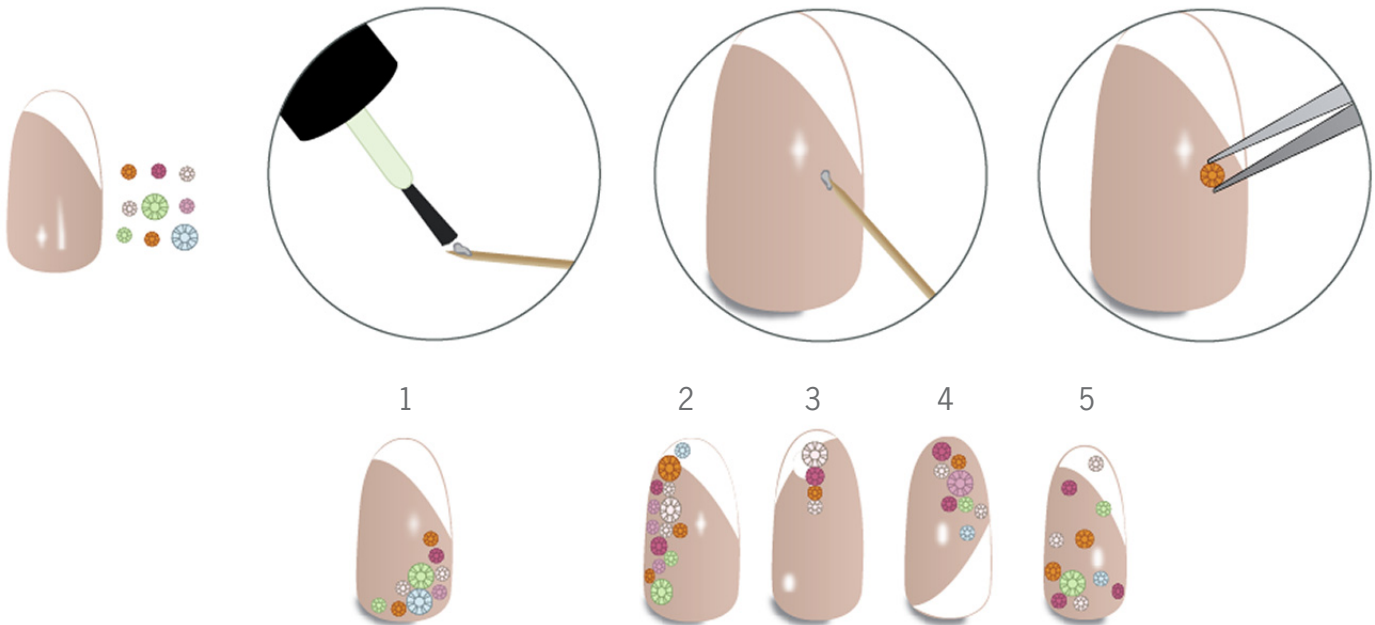
Level of Design: INTERMEDIATE

VARIATION 1

Step 1: Paint the first nail polish color onto the plastic nails and let them dry for 10 minutes. Apply the second color at the base of the nail as shown in the illustration. Repeat this step for all the other nine nails.



Step 2: Put a small drop of glue onto the tooth pick and stick the CRYSTALLIZED™ Flat Backs No Hotfix as shown in the illustration. Repeat this step for the other nine nails. Follow the pattern as shown in the illustration.



VARIATION 2

Step 1: Paint the first nail polish color onto the plastic nails and let them dry for 10 minutes. Apply the second color at the base of the nail as shown in the illustration. Repeat this step for all the other nine nails.



Step 2: Put a small drop of glue onto the tooth pick and stick the CRYSTALLIZED™ Flat Backs No Hotfix as shown in the illustration. Repeat this step for the other nine nails. Follow the pattern as shown in the illustration.

