

CREATE
YOUR STYLE
with SWAROVSKI ELEMENTS

XILION BEAD DESIGN PROJECT

Holiday

DECORATION
SPARKLING
BOTTLE

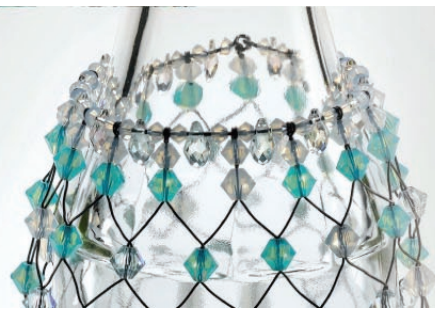


Holiday Special!



Instruction Guide

INSTRUCTION PACKAGE XILION BEAD DECORATION SPARKLING BOTTLE



SWAROVSKI ELEMENTS

Article	Product Group	Article No.	Amount	Size	Color	Color Code
	Beads	5328	30 pcs.	3 mm	White Opal	234
	Beads	5328	15 pcs.	4 mm	White Opal	234
	Beads	5328	36 pcs.	5 mm	White Opal	234
	Beads	5328	36 pcs.	5 mm	Pacific Opal	390
	Beads	5328	33 pcs.	5 mm	Light Azore	361
	Beads	5328	15 pcs.	6 mm	Crystal Moonlight	001 MOL
	Pendants	6007	15 pcs.	7x4 mm	Crystal Moonlight	001 MOL
	Pendants	6010	15 pcs.	13x6.5 mm	Crystal Moonlight	001 MOL

Supplies & Tools

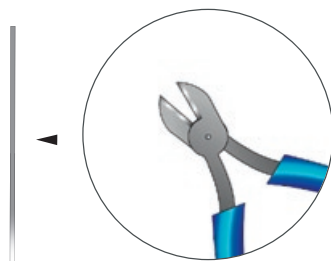
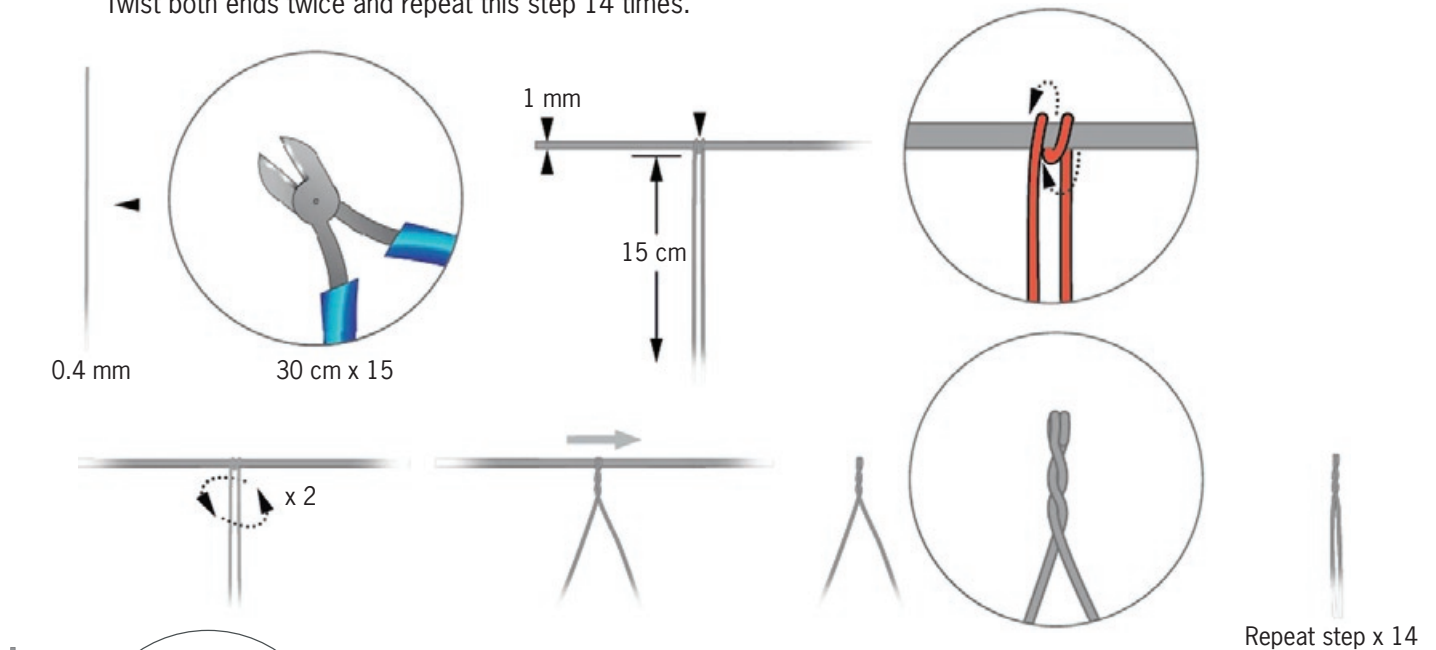
Supplies

0.2ltr Glass Bottle, Transparent
 15cm Jump Ring, 4mm
 450cm Steel Wire, Blue 0.4mm
 20cm Steel Wire, Blue 0.7mm
 25cm Steel Wire, 1mm

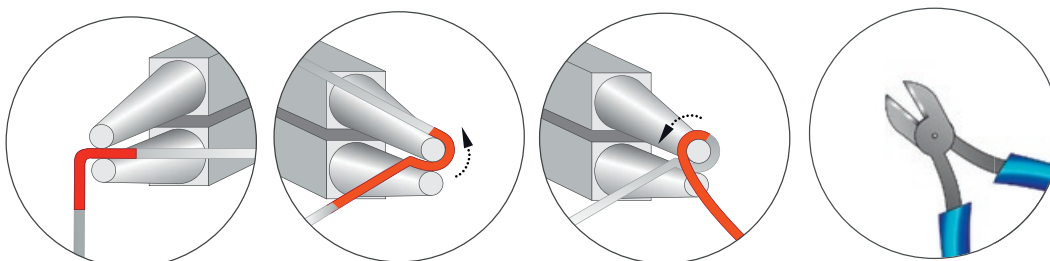
Tools

Flat nose pliers, 2pcs.
 Round nose pliers
 Ruler
 Side Cutter
 Tweezers

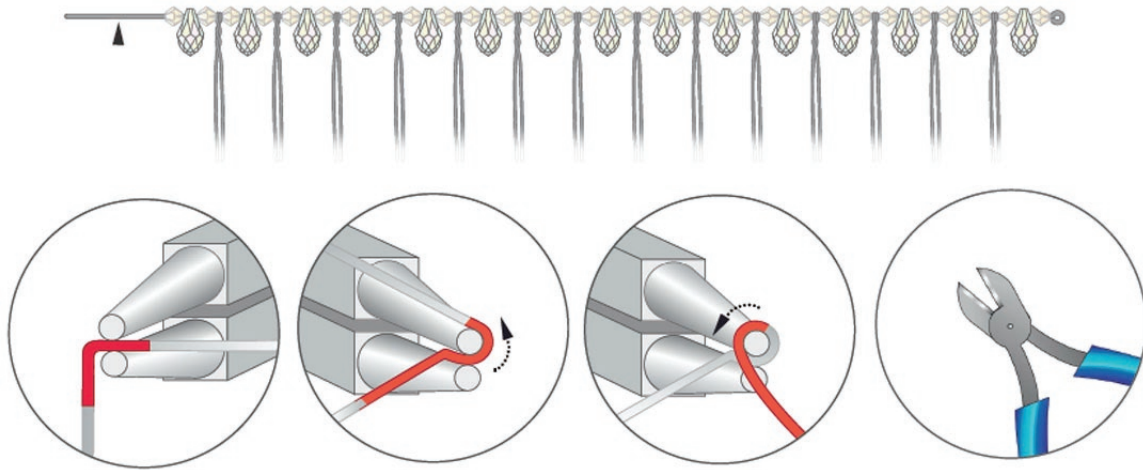
STEP 1: Cut fifteen 30 cm pieces of 0.4 mm wire using side cutter. Loop the wire around the 1 mm wire as shown in illustration. Twist both ends twice and repeat this step 14 times.



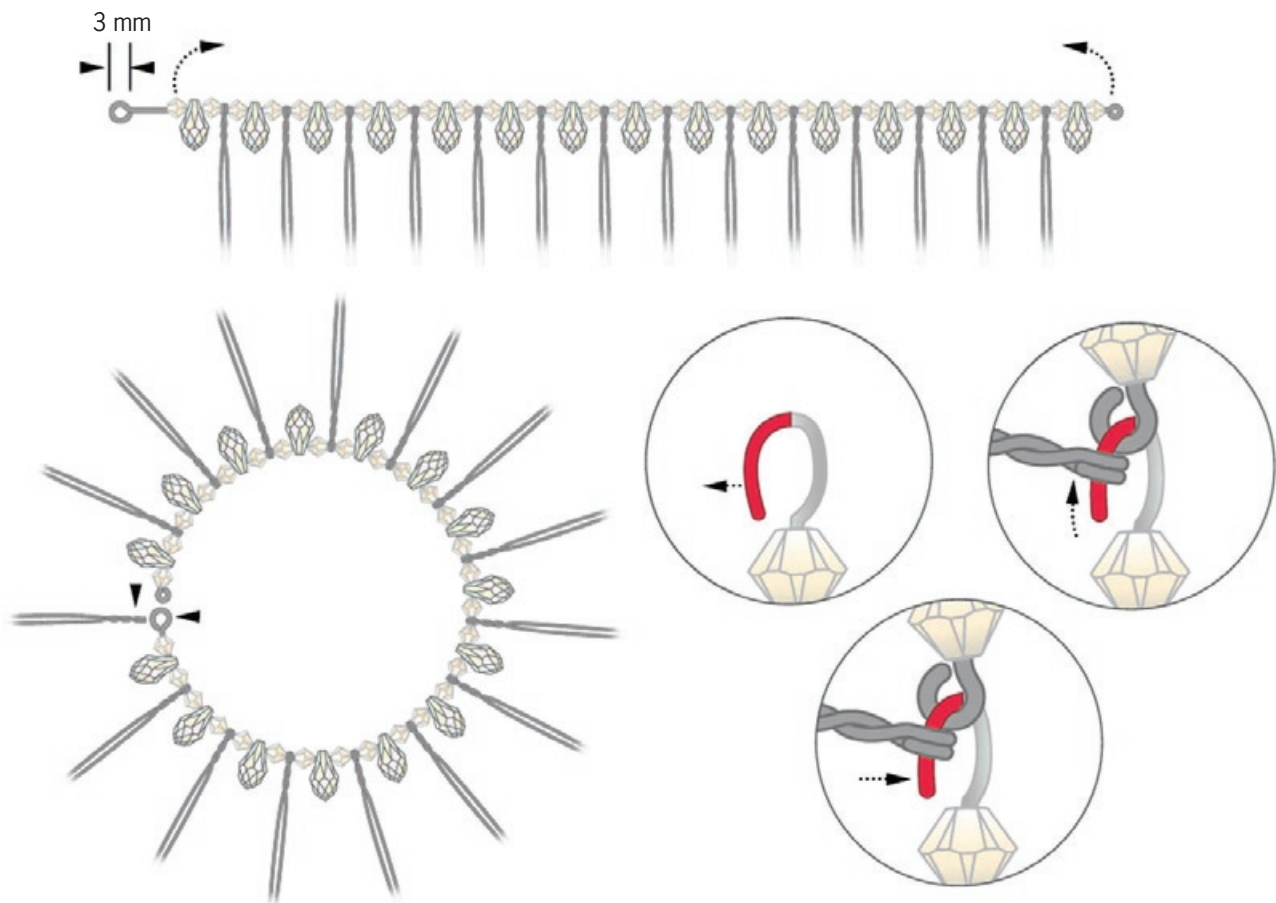
STEP 2: Cut off 20cm of the 0.7mm wire. Bend wire at right angles and form a small loop using the round nose pliers. Cut off excess with side cutter.



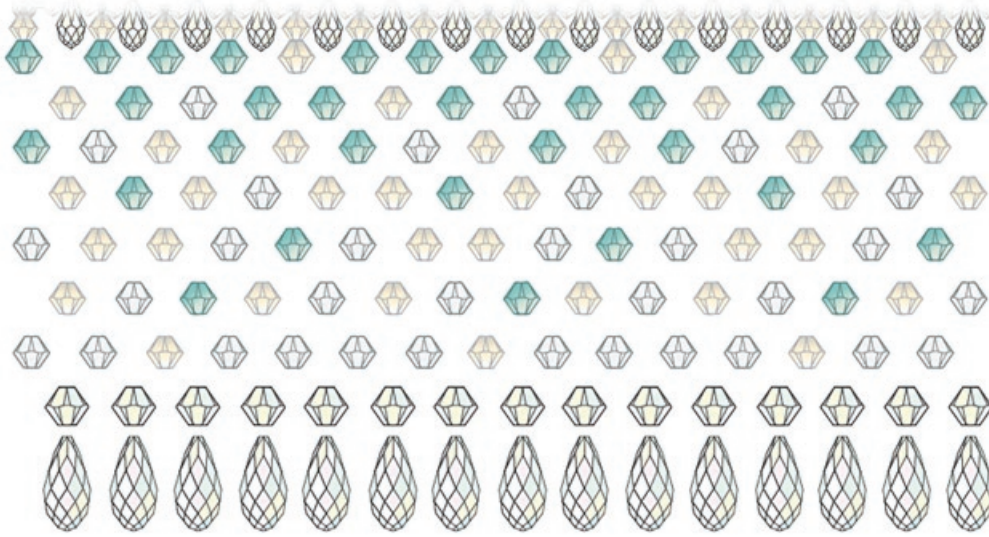
STEP 3: Thread on the SWAROVSKI ELEMENTS Pendants article 6007, the SWAROVSKI ELEMENTS Xilion Beads article 5328 3 mm in white opal and the 15 pieces of twisted wire from step 1 in the order as shown in the below. Bend the left end of the wire at a right angle and form a 3 mm loop using the round nose pliers. Cut off excess.



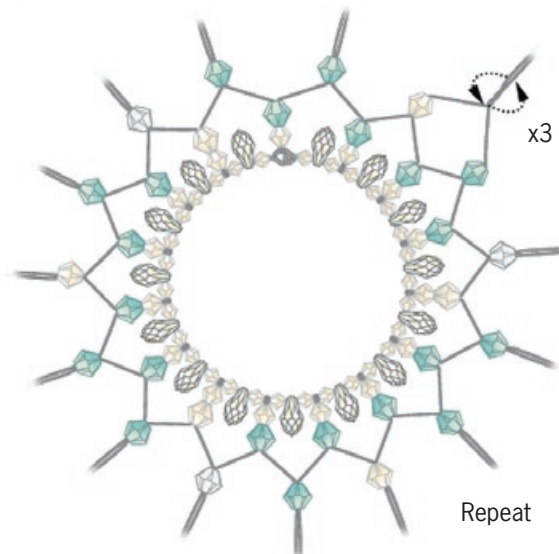
STEP 4: Open the 3 mm loop sideways using flat nose pliers and insert smaller loop and the 15th twisted wire as shown. Close the loop.



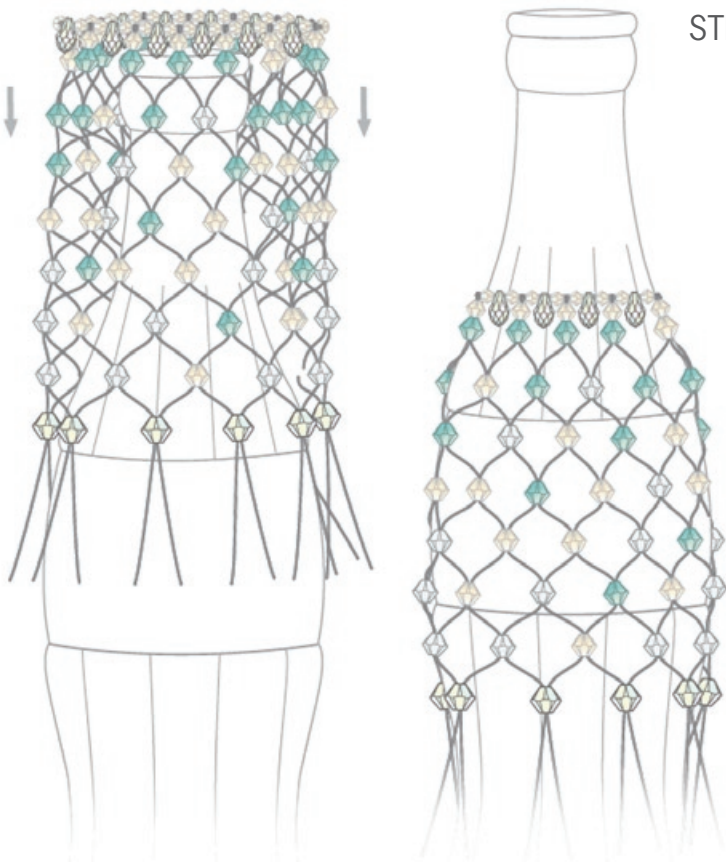
STEP 5: Arrange the SWAROVSKI ELEMENTS in the illustrated order. First slide onto each wire the SWAROVSKI ELEMENTS Bead article 5328 4mm White Opal. Then slide on the SWAROVSKI ELEMENTS Bead article 5328 5 mm Pacific Opal as well as the SWAROVSKI ELEMENTS Bead article 5328 5mm White Opal.



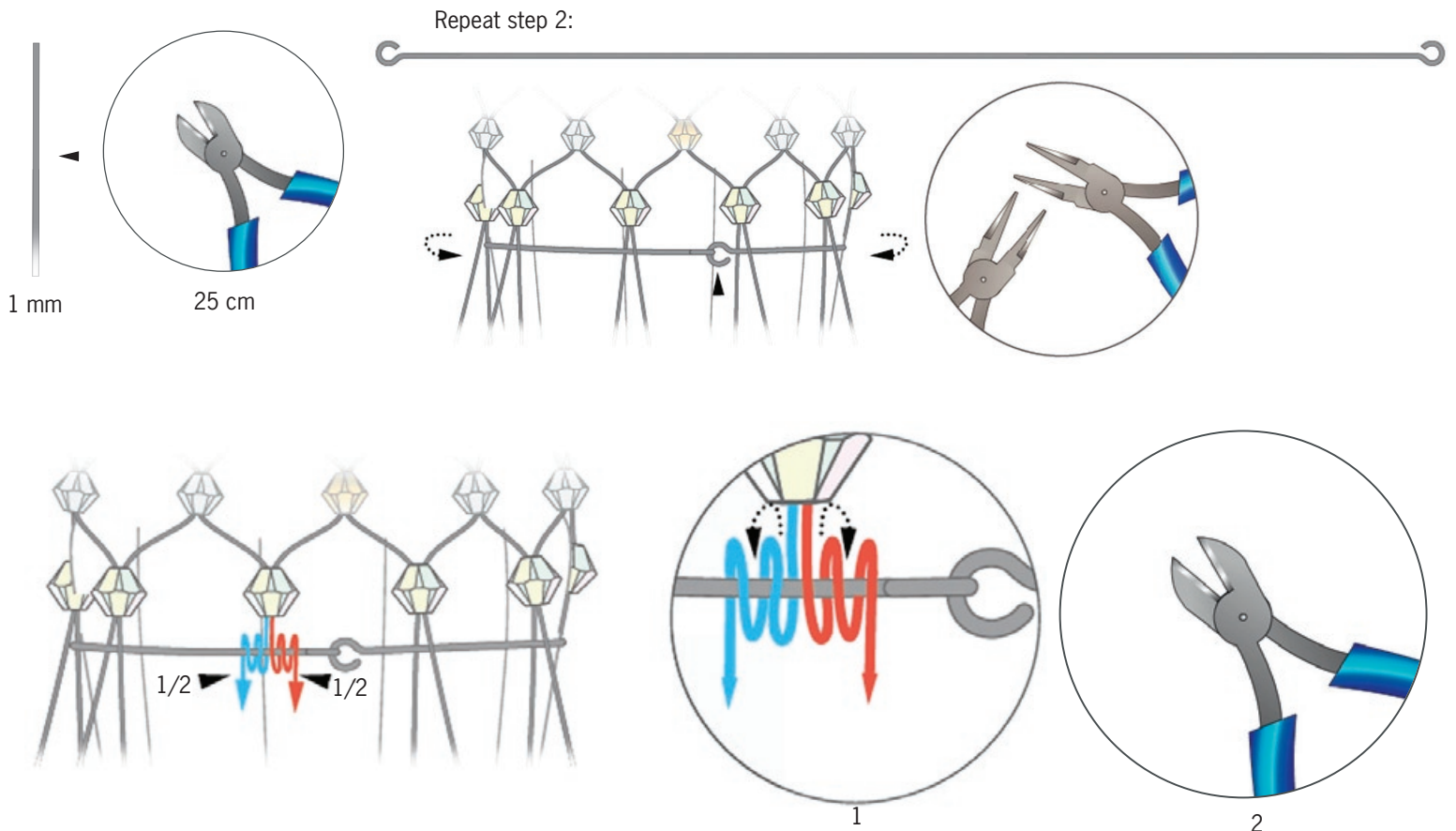
STEP 6: Bend the wire ends apart and twist them as illustrated using the flat nose pliers. Slide on next Beads from the SWAROVSKI ELEMENTS assortment as shown in the illustration. Repeat this step with the remaining Beads.



STEP 7: Put the crystal coat over a bottle as shown.

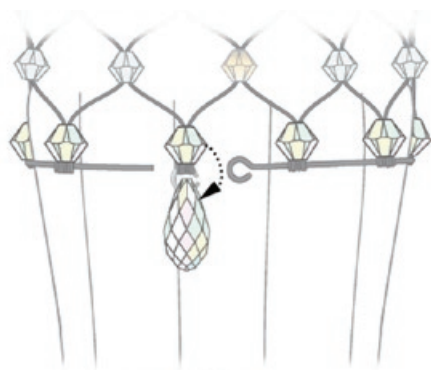
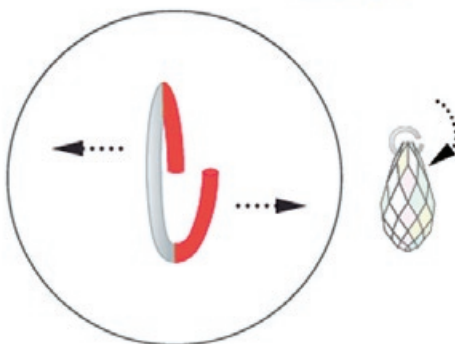
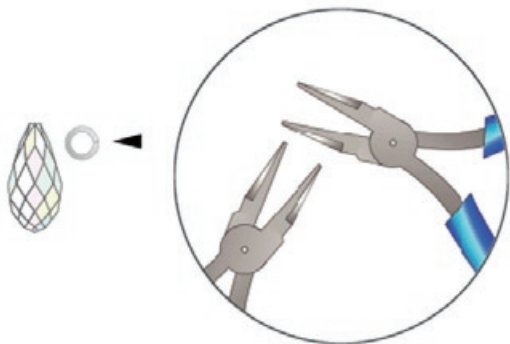
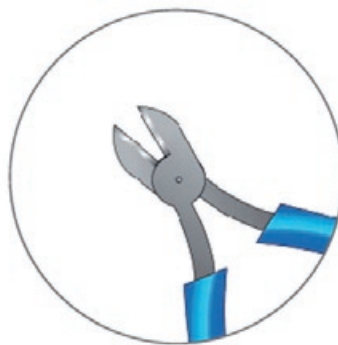
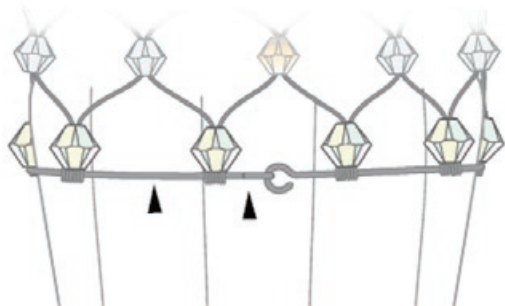


STEP 8: Cut off 25cm of 1mm wire and form a loop on each end using the round nose pliers. Place the wire over the bottom of the "coat" under the last row of beads. Insert one loop into the other as shown in illustration forming a circle. Wrap ends of wire from "coat" around the circle twisting one behind and one in front of the wire of circle. Repeat this step 14 times with all remaining bottom wires on "coat".



Repeat x14

STEP 9: Cut off wire circle using side cutter and remove it. Open a 4mm jump ring using flat nose pliers and insert the SWAROVSKI ELEMENTS Pendant article 6010. Attach it to the loop formed at the bottom of the last bead on the "coat" and close the jump ring. Repeat this step 14 times.



Repeat x14

