

CREATE  
YOUR STYLE with  
CRYSTALLIZED™  
- Swarovski Elements

DESIGN PROJECT  
KIDS SPECIAL  
BUTTERFLY  
SHOES



*INSTRUCTION GUIDE*

# BUTTERFLY SHOES



## CRYSTALLIZED™ - Swarovski Elements

Version 1

Article	Product Group	Article No.	Amount	Size	Color	Color Code
	Crystal Pearls	5810	8 pcs.	3 mm	Deep Brown Pearl	001 414
	Pendants	6690	4 pcs.	27 mm	Crystal Red Magma	001 REDM
	Pendants	6690	4 pcs.	23 mm	Light Topaz	226

Version 2

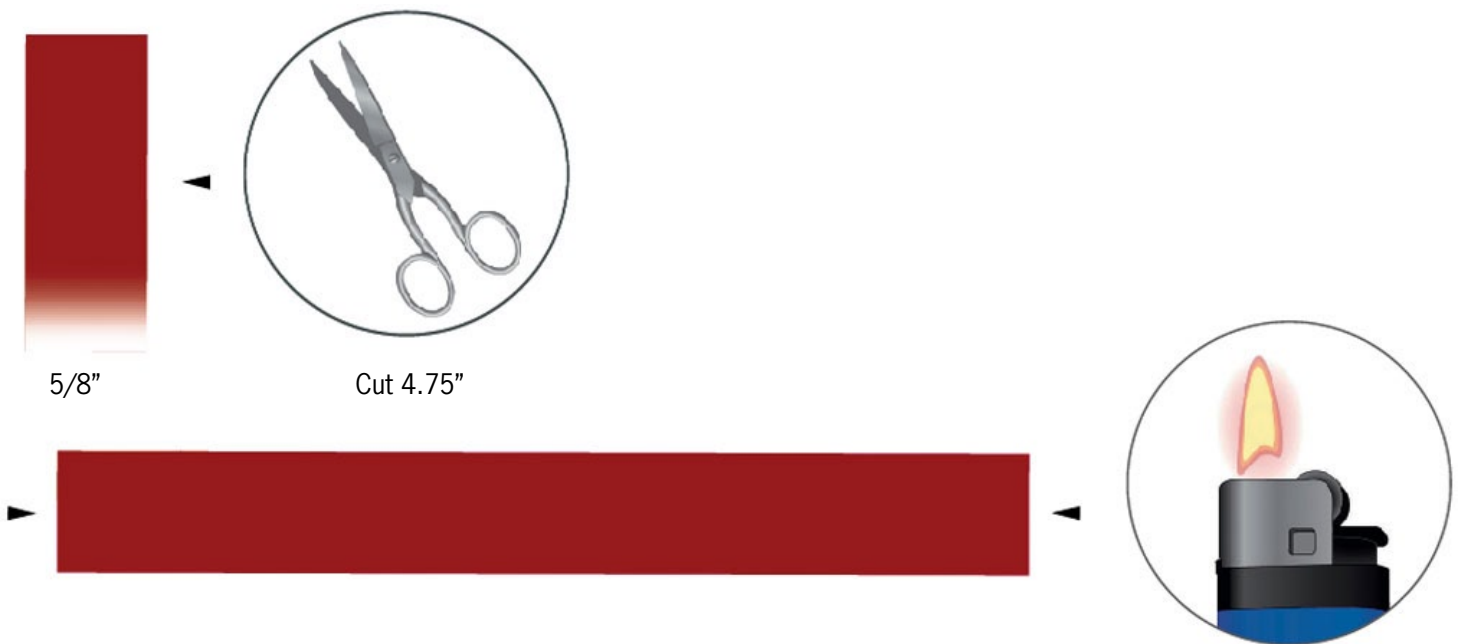
Article	Product Group	Article No.	Amount	Size	Color	Color Code
	Crystal Pearls	5810	8 pcs.	3 mm	Maive Pearl	001 160
	Pendants	6690	4 pcs.	27 mm	Provence Lavender	283
	Pendants	6690	4 pcs.	23 mm	Capri Blue	243

## Supplies & Tools

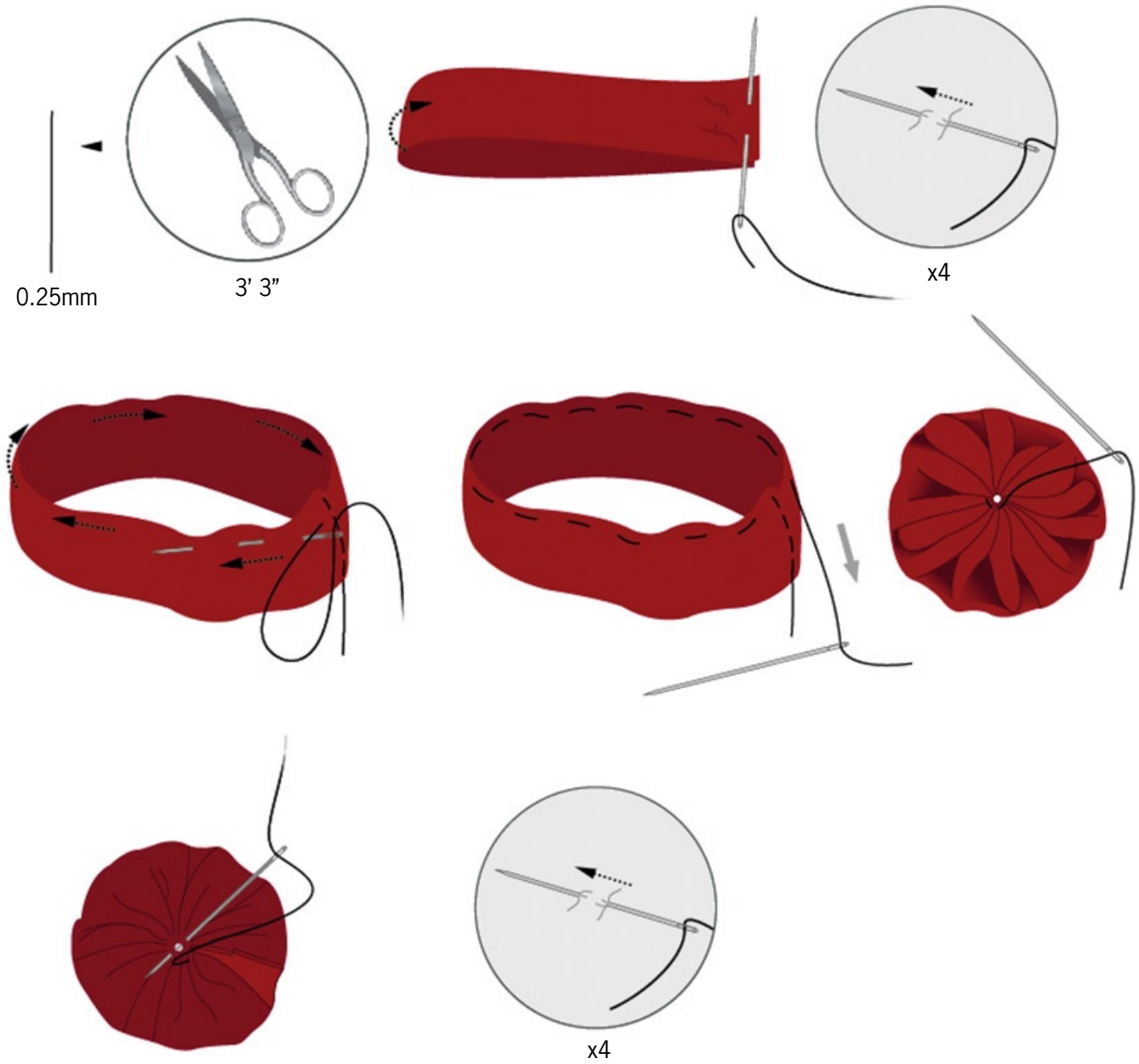
- Supplies
- 0.25mm Nylon Thread, Transparent, 6' 7"
  - 15mm Silver Push Button, x2
  - 1/8" Red Satin Ribbon, 5.5"
  - 5/8" Dark Red Velvet Ribbon, 9.5"
- Tools
- Fine Needle
  - Lighter
  - Scissors

- Supplies
- 0.25mm Nylon Thread, Transparent, 6' 7"
  - 15mm Silver Push Button, x2
  - 1/8" Yellow Satin Ribbon, 5.5"
  - 5/8" Turquoise Velvet Ribbon, 9.5"
- Tools
- Fine Needle
  - Lighter
  - Scissors

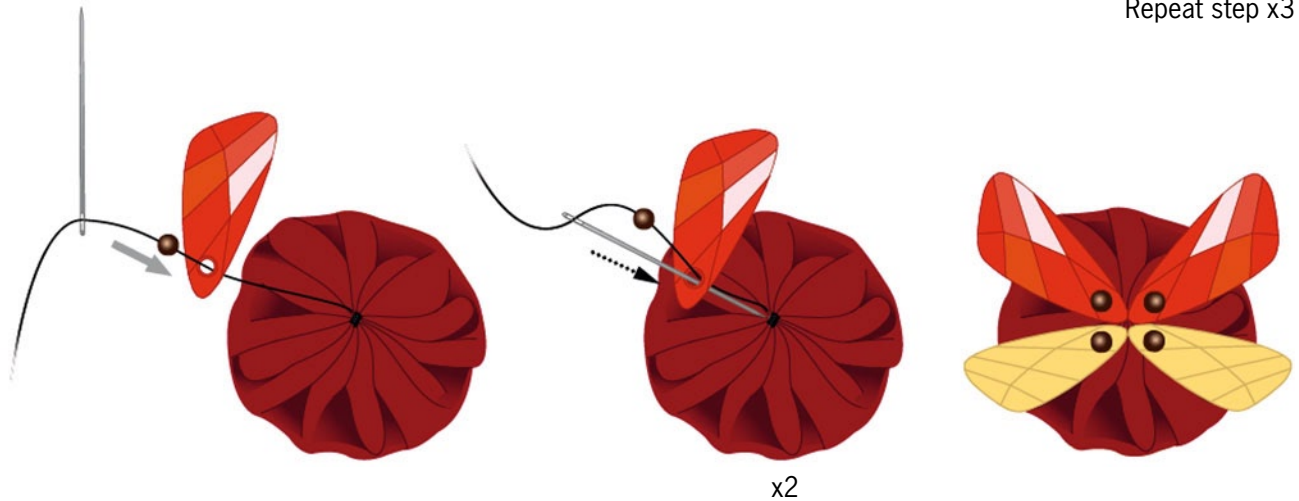
STEP 1: Cut 4.75" of velvet ribbon and melt the ends, so they don't fringe.



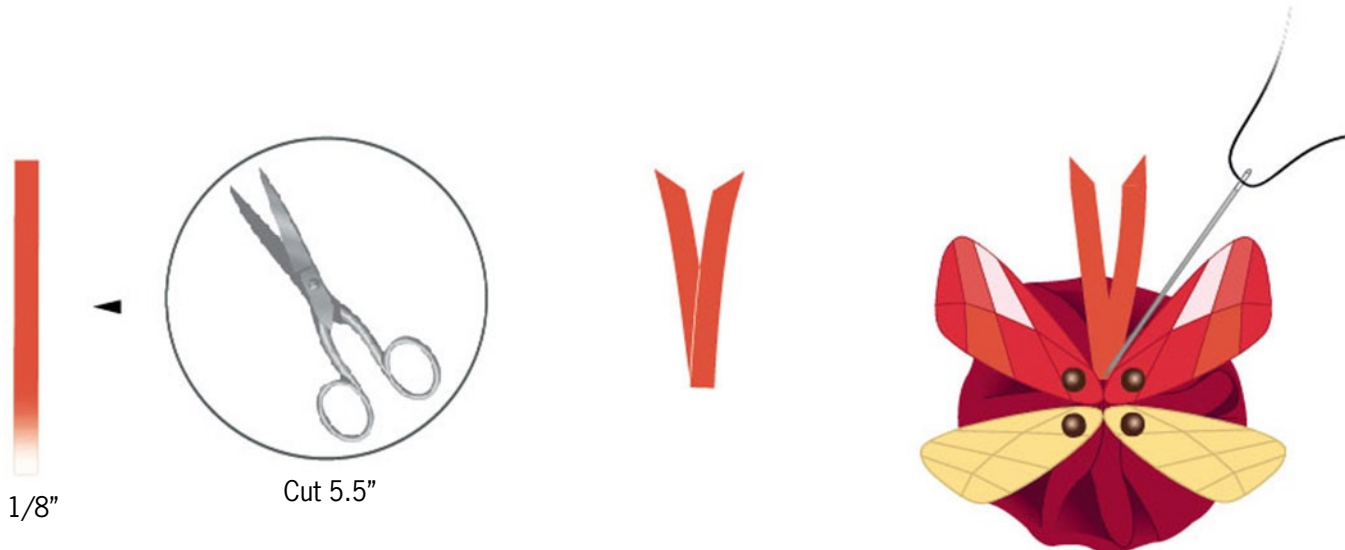
STEP 2: Cut 3' 3" of the 0.25mm nylon thread, fold the velvet ribbon in half and sew ends together. Then stitch nylon thread around upper border as shown in the illustration. Pull thread tight so that a circle form comes out as you see below. Fix the thread with 4 black stitches so that form is secure.



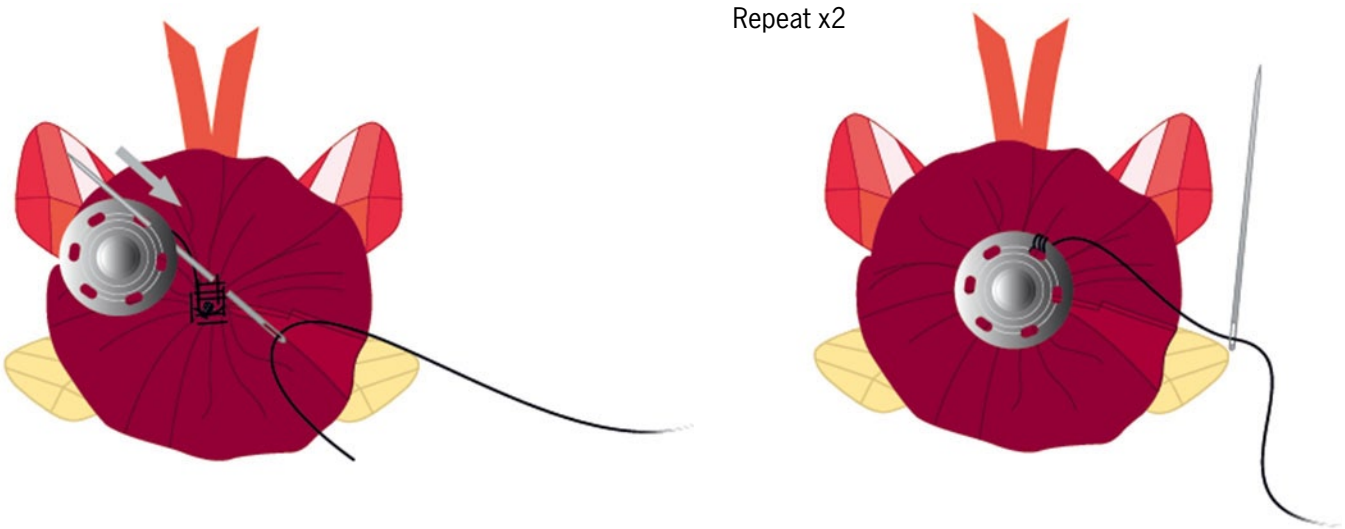
STEP 3: Sew the CRYSTALLIZED™ Pendants article 6690 and the Crystal Pearls article 5810 onto velvet ribbon as shown. Repeat step x3



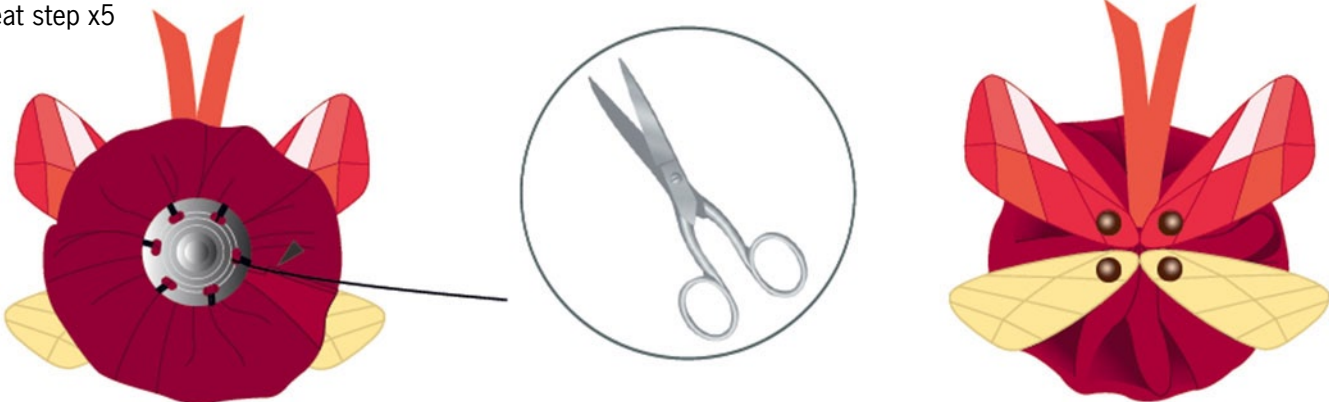
STEP 4: Cut 5.5" of satin ribbon, fold it in half and sew it onto the velvet ribbon.



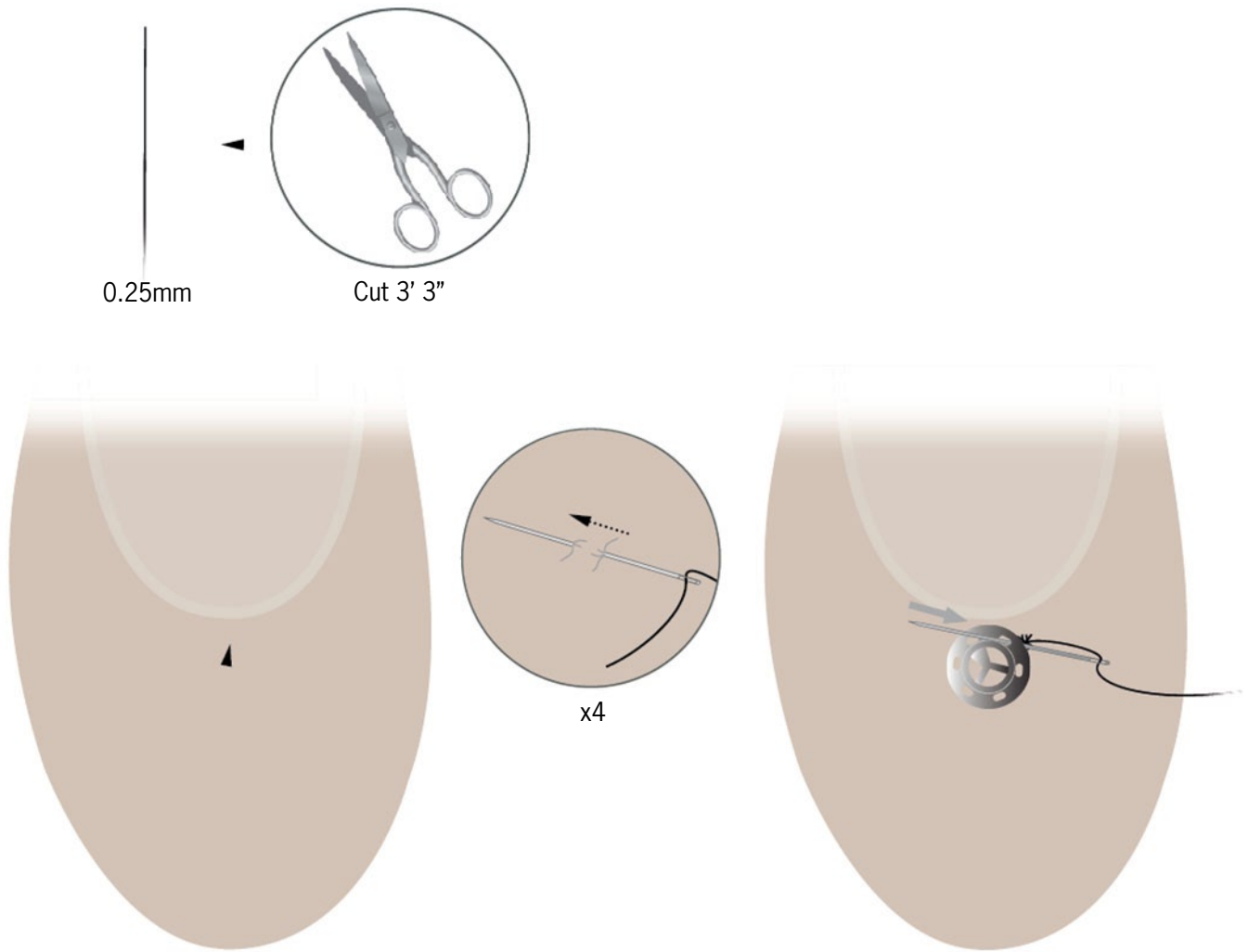
STEP 5: Sew one half of the push button onto the back of the velvet ribbon as shown.



Repeat step x5



STEP 6: Cut 3' 3" of the 0.25mm nylon thread and attach it with 4 back stitches onto shoe and sew the 2nd part of the push button onto the shoe.



STEP 7: Put the "butterfly" onto the shoe and repeat all steps for a second shoe.

